



## COUNCIL

**Meeting: Thursday, 25th September 2014 at 19.00 hours  
in Civic Suite, North Warehouse, The Docks, Gloucester, GL1 2EP**

## ADDENDUM

The following items although provided for on the agenda front sheet were not available at the time of dispatch:

9.	<b>COUNCIL PLAN ACHIEVEMENTS 2011-14 (PAGES 5 - 16)</b> To consider the report of the Leader of the Council concerning achievements against the Council Plan 2011-2014 (to follow).
12.	<b>BOUNDARY REVIEW - PROPOSED WARDING PATTERNS (PAGES 17 - 42)</b> Appendix 2 only.

Yours sincerely

.....  
**Martin Shields**  
**Corporate Director of Services and Neighbourhoods**

## NOTES

### Disclosable Pecuniary Interests

The duties to register, disclose and not to participate in respect of any matter in which a member has a Disclosable Pecuniary Interest are set out in Chapter 7 of the Localism Act 2011.

Disclosable pecuniary interests are defined in the Relevant Authorities (Disclosable Pecuniary Interests) Regulations 2012 as follows –

<u>Interest</u>	<u>Prescribed description</u>
Employment, office, trade, profession or vocation	Any employment, office, trade, profession or vocation carried on for profit or gain.
Sponsorship	Any payment or provision of any other financial benefit (other than from the Council) made or provided within the previous 12 months (up to and including the date of notification of the interest) in respect of any expenses incurred by you carrying out duties as a member, or towards your election expenses. This includes any payment or financial benefit from a trade union within the meaning of the Trade Union and Labour Relations (Consolidation) Act 1992.
Contracts	Any contract which is made between you, your spouse or civil partner or person with whom you are living as a spouse or civil partner (or a body in which you or they have a beneficial interest) and the Council (a) under which goods or services are to be provided or works are to be executed; and (b) which has not been fully discharged
Land	Any beneficial interest in land which is within the Council's area.  For this purpose "land" includes an easement, servitude, interest or right in or over land which does not carry with it a right for you, your spouse, civil partner or person with whom you are living as a spouse or civil partner (alone or jointly with another) to occupy the land or to receive income.
Licences	Any licence (alone or jointly with others) to occupy land in the Council's area for a month or longer.
Corporate tenancies	Any tenancy where (to your knowledge) – (a) the landlord is the Council; and (b) the tenant is a body in which you, your spouse or civil partner or a person you are living with as a spouse or civil partner has a beneficial interest
Securities	Any beneficial interest in securities of a body where – (a) that body (to your knowledge) has a place of business or land in the Council's area and

- (b) either –
- i. The total nominal value of the securities exceeds £25,000 or one hundredth of the total issued share capital of that body; or
  - ii. If the share capital of that body is of more than one class, the total nominal value of the shares of any one class in which you, your spouse or civil partner or person with whom you are living as a spouse or civil partner has a beneficial interest exceeds one hundredth of the total issued share capital of that class.

For this purpose, “securities” means shares, debentures, debenture stock, loan stock, bonds, units of a collective investment scheme within the meaning of the Financial Services and Markets Act 2000 and other securities of any description, other than money deposited with a building society.

NOTE: the requirements in respect of the registration and disclosure of Disclosable Pecuniary Interests and withdrawing from participating in respect of any matter where you have a Disclosable Pecuniary Interest apply to your interests and those of your spouse or civil partner or person with whom you are living as a spouse or civil partner where you are aware of their interest.

#### **Access to Information**

Agendas and reports can be viewed on the Gloucester City Council website: [www.gloucester.gov.uk](http://www.gloucester.gov.uk) and are available to view five working days prior to the meeting date.

For further details and enquiries about this meeting please contact Tanya Davies, 01452 396125, [tanya.davies@gloucester.gov.uk](mailto:tanya.davies@gloucester.gov.uk).

For general enquiries about Gloucester City Council’s meetings please contact Democratic Services, 01452 396126, [democratic.services@gloucester.gov.uk](mailto:democratic.services@gloucester.gov.uk).

If you, or someone you know cannot understand English and need help with this information, or if you would like a large print, Braille, or audio version of this information please call 01452 396396.

#### **FIRE / EMERGENCY EVACUATION PROCEDURE**

If the fire alarm sounds continuously, or if you are instructed to do so, you must leave the building by the nearest available exit. You will be directed to the nearest exit by council staff. It is vital that you follow their instructions:

- You should proceed calmly; do not run and do not use the lifts;
- Do not stop to collect personal belongings;
- Once you are outside, please do not wait immediately next to the building; gather at the assembly point in the car park and await further instructions;
- Do not re-enter the building until told by a member of staff or the fire brigade that it is safe to do so.

This page is intentionally left blank



## Gloucester City Council

<b>Meeting:</b>	<b>Council</b>	<b>Date:</b> 25 September 2014
<b>Subject:</b>	<b>Council Plan Achievements 2011-2014</b>	
<b>Report Of:</b>	<b>Leader of the Council and Cabinet Member for Performance &amp; Resources</b>	
<b>Wards Affected:</b>	<b>All</b>	
<b>Key Decision:</b>	<b>No</b>	<b>Budget/Policy Framework: No</b>
<b>Contact Officer:</b>	<b>Tom Hewish</b>	
	<b>Email: tom.hewish@gloucester.gov.uk</b>	<b>Tel: 396992</b>
<b>Appendices:</b>	<b>A. Council Plan 2011-2014 Priorities</b>	
	<b>B. Council Plan 2011- 2014 Achievements</b>	

### FOR GENERAL RELEASE

#### 1.0 Purpose of Report

- 1.1 This report presents highlights of the achievements towards the key priorities of the Council Plan 2011-2014 *Transforming Your City*<sup>1</sup>. The Council Plan detailed the priorities of the City Council over the 3 year period and directed Service Plans to ensure services were aligned to priorities.

#### 2.0 Recommendations

- 2.1 Council is asked to **RESOLVE** that the report be noted.

#### 3.0 Background and Key Issues

- 3.1 The Council Plan 2011-14 set out how Gloucester City Council intended to deliver its role in improving, developing and promoting the economic, environmental and social wellbeing of communities in the City. It was developed by the Administration of 2011 working with Officers to confirm the priorities of the Council for the following three years. The plan was preceded by the Corporate Plan 2009-11, *Building a Better Gloucester*. Contained within this report as an appendix<sup>2</sup> is a document highlighting the key achievements delivered against the Council Plan 2011-14, *Transforming Your City*.
- 3.2 The overarching priorities that determined the Council Plan 2011-14 were; *Prosperity – Strengthening Gloucester’s Economy; People – A City for Everyone; and Place – Creating Pride in Our City*.

<sup>1</sup> Excerpt of Council Plan 2011-14 priorities attached as Appendix A

<sup>2</sup> Appendix B

#### **4.0 Alternative Options Considered**

4.1 There are no alternative options to be considered as part of this report.

#### **5.0 Reasons for Recommendations**

5.1 To update members on the wide range of activities and high levels of performance delivered by the Council against its Council Plan 2011-14.

#### **6.0 Future Work and Conclusions**

6.1 To publish the achievements on the Council website.

6.2 Future priorities for the Council have been outlined in the updated Council Plan 2014-17 which was adopted by Full Council on 17<sup>th</sup> July 2014. This plan continues the three core priorities of Prosperity, People and Place, but also includes Performance as a fourth priority.

#### **7.0 Financial Implications**

7.1 Contained within Appendix B is an overview of how the Council has performed against the saving targets outlined in the Council Plan 2011-14.

#### **8.0 Legal Implications**

8.1 Under the Constitution, the Council Plan forms part of the Council's Policy Framework.

#### **9.0 Risk & Opportunity Management Implications**

9.1 This gives us the opportunity to celebrate and acknowledge our successes, and to continue to build on activities started as part of the previous Council Plan that are now imbedded in the current Plan.

#### **10.0 People Impact Assessment (PIA):**

10.1 The impact of each area of the Council Plan was assessed at the time of finalisation to ensure compliance with the Public sector equality duty and general duties of the Equality Act 2010.

#### **11.0 Other Corporate Implications**

11.1 The core principles and priorities of the Council Plan 2011-14 influenced and directed the allocation of Council resources and efforts throughout the plan's duration. The successes and projects therein have influenced the focus and content of the current Council Plan (2014-17) as a continuation and development of Council priorities.

#### **12.0 Background Documents:**

12.1 Corporate Plan 2009-2011, *Building a Better Gloucester*.

## Corporate Priorities 2011 – 2014

	Priority	What we want to achieve	What we are going to do
Prosperity	Strengthening Gloucester's Economy	<ul style="list-style-type: none"> <li>• Increased levels of inward investment in the city</li> <li>• A thriving and growing business sector</li> <li>• A diverse and vibrant night-time economy</li> <li>• A well-skilled and flexible workforce</li> <li>• Further progress in the city's regeneration</li> </ul>	<ol style="list-style-type: none"> <li>1 We will increase the number of new business start ups in the city</li> <li>2 We will identify key growth sectors and seek to attract inward investment</li> <li>3 We will ensure that Gloucester businesses can access appropriate business support services</li> <li>4 We will deliver the actions in the night time economy action plan with partners</li> <li>5 We will work with partners to improve educational attainment, training opportunities and job prospects for local people</li> <li>6 We will work to deliver the regeneration of the city, particularly King's Quarter, Blackfriars, the Railway Triangle and Greyfriars</li> </ol>
People	A City for Everyone	<ul style="list-style-type: none"> <li>• A reduction in the levels of deprivation in the city</li> <li>• Excellent services shaped by our communities and their needs</li> <li>• Housing stock that meets the needs of our residents</li> <li>• Greater participation in voluntary and community activity to deliver "The Big Society"</li> <li>• Diverse communities that are welcomed, supported and involved in the life of the city</li> </ul>	<ol style="list-style-type: none"> <li>1 We will develop a multi-agency approach to tackling deprivation</li> <li>2 <ul style="list-style-type: none"> <li>• We will target voluntary and community sector grants to help meet the council's priorities</li> <li>• We will encourage community and voluntary groups and social enterprises to take on additional activities</li> </ul> </li> <li>3 We will use more channels to engage with all parts of the community to understand and respond to their concerns and tailor services to their needs</li> <li>4 We will seek the provision of affordable housing in all new residential schemes.</li> <li>5 We will work with partners and property owners to return empty properties back into use and improve the conditions of private rented accommodation.</li> <li>6 We will determine the future management arrangements for the council's housing stock</li> <li>7 We will support communities to strengthen and grow</li> <li>8 We will increase opportunities and support for volunteering as part of "The Big Society"</li> <li>9 We will support communities to celebrate their diversity</li> <li>10 We will continue to evolve and deliver our equalities agenda</li> </ol>
Place	Creating Pride in Our City	<ul style="list-style-type: none"> <li>• A world-class historic destination</li> <li>• A clear and positive identity for Gloucester</li> <li>• A diverse portfolio of events in the city</li> <li>• A greener and cleaner city</li> <li>• A city recognised for its sports facilities, clubs and their achievements</li> </ul>	<ol style="list-style-type: none"> <li>1 <ul style="list-style-type: none"> <li>• We will promote the city, nationally and internationally as an historic destination</li> <li>• We will find new, innovative uses for historical venues, increasing access and awareness of the city's heritage amongst residents and visitors</li> </ul> </li> <li>2 We will find new ways to "tell the story" of Gloucester, including a major refurbishment of our museums, better interpretation of monuments and buildings and holding at least one major event in the city each year, such as Tall Ships Festival, History Festival</li> <li>3 We will implement the "Your City" campaign, highlighting Gloucester's key strengths</li> <li>4 <ul style="list-style-type: none"> <li>• We will further improve standards of cleanliness in the city</li> <li>• We will discourage environmental crime such as littering, dog fouling and fly-tipping, by all means possible</li> </ul> </li> <li>5 We will encourage people to reduce the waste they create and recycle as much as possible</li> <li>6 We will implement our Climate Change Strategy, leading by example and encouraging others to do their bit</li> <li>7 We will develop a sustainable approach to providing colour and greenery in the city</li> <li>8 We will improve the facilities at the Blackbridge athletics track</li> <li>9 We aspire to a new all weather track in Gloucester</li> <li>10 We will work with Gloucester City Football Club to enable them to return to a ground in the city as soon as possible</li> </ol>

This page is intentionally left blank



# Transforming Your City

## Achievements





# Prosperity

## Strengthening Gloucester's Economy

### Increased levels of inward investment

Economic Development proactively targeted potential investors in the City. This work has contributed to 2013 being a record year for company registrations in Gloucester.

An estimated £100 million has been invested in the City over the course of the last Council Plan.

We have developed a range of materials to attract investment including the Gloucester Commercial Opportunities Guide and the Gloucester Investment Guide that outlines facts and figures.

### A thriving and growing business sector

We established the Gloucester Supports Business Programme to provide a holistic package of business support for pre-start, fledgling, growing and existing businesses.

Gloucester has seen year on year growth since 2010 in its business start-up rate.

We provided 48 grants to support new start-up businesses over the duration of the last Council Plan, supporting the creation of 162 new jobs.

We introduced a clear policy for licensing Tables, Chairs and Advertising Boards on the highway, to improve both the safety and appearance of our City Centre.

We have reduced parking charges in our city centre car parks to encourage shoppers to spend more time in the City.

As part of the Believe in Gloucester campaign we established the annual Residents Weekend; providing residents with the chance to discover areas of the city they may not have seen before, as well as being able to take advantage of many special offers available only to residents of Gloucester.

We have relocated staff from North Warehouse, allowing us to generate income through leasing part of the building to Regus who use the space to provide flexible meeting rooms for local businesses.

We have provided a free business start-up guide, including information about local and national support available to businesses.

Building on the successful Quays Creative project established by the Economic Development Service in Gloucester Docks, we worked with the University of Gloucestershire to secure £1 million ERDF funding, which in turn enabled the securing of Blackfriars Inn, a City Council property asset currently being used to support fledgling businesses.

We have established two freely distributed e-newsletters to update businesses in the City Centre (City Centre Newsletter) and across the City (Your Business Matters) about important information and support available to them. We also distributed a printed leaflet to 4,000 local businesses informing them of what assistance and support we can provide.

We established the Gloucester Business Directory – providing details on the products and services of over 2,000 companies trading in Gloucester.

We established Independents' Week, organised by the Council and Marketing Gloucester; more than 50 independent traders in Gloucester took part in providing shoppers with discounts and special offers in a week long shopping spree from 1st to 7th July 2013.

The Council has been working with Gloucester City Centre Community Partnership to support a series of new and exciting themed markets, which took place in the Gate Streets between October and December 2013.

We secured our first Gloucester Rugby Sponsorship Package, which aims to capitalise on the networks of the two organisations to attract investment and encourage economic growth within Gloucester.

The City Council's element of the Council Tax has been frozen for 4 years.

The Underground Festival is now in its 5th Year and has sold out each year.

Guildhall cinema upgraded from 35mm reel to digital technology, enabling a wider programme of films to be shown.

### A diverse and vibrant night-time economy

The evening vitality grant scheme was launched to support new restaurants and wine bars in the City Centre.

Further expansion of the Gloucester Quays Outlet, with many new restaurants, bars and evening entertainment.

To celebrate Gloucester's diversity and encourage more use of the City Centre in the evenings, the markets team held two successful night markets.

We launched the 'Nightsafe' project in Eastgate St - Closure of Eastgate St to vehicles on a Friday & Saturday night including relocating taxi rank to GL1.

We have updated the cinema facilities at the Guildhall, the cinema is now fully digital, providing state-of-the-art picture and sound quality.

Successful bid to PCC for a City Safe Manager and Taxi marshalls.

## A well skilled and flexible workforce

Falling Council budgets have forced authorities to critically challenge staff provision. Over the course of the Council Plan GCC has been forced to make staff reductions, but we have done this whilst ensuring as little impact as possible to frontline services.

We have operated a monthly Enterprise Club in partnership with Gloucestershire Enterprise Ltd to provide people with the skills and knowledge to start their own business.

We have partnered with a range of organisations to provide subsidised workshop training for growing businesses.

We provide free 1-2-1 business advice and mentoring to support local businesses.

The Council has worked with the Gloucester Language Immersion Centre to provide support and advice.

We have worked in partnership with Adult Education to establish a Gloucester Entrepreneurs course, which is aimed at those over the age of 19, currently unemployed and interested in becoming self-employed.

In 2012, we engaged with Morrisons, Jobcentre Plus, Gloucestershire Adult Education, Pluss, Gloucestershire College and Work Programme providers to pilot an interview guarantee scheme for Morrisons' new store recruitment.



## Further progress in the city's regeneration

There has been significant progress made on large key regeneration sites such as Greyfriars and the Railway Triangle; including securing a £60 million investment commitment for Kings Quarter. The re-development of the former media centre site as the first part of the Linden Homes Greyfriars scheme, which is an example of regeneration for housing right in the heart of the city centre which included a complex programme of archaeological works to enable the house building to take place.

We commenced the preparation of the first Joint Core Strategy (JCS), outlining development plans across local authority boundaries.

We completed the adoption of planning policy statements to support the regeneration of the King's Quarter (2013) and the Fleece Hotel (2012).

We continued work on the Gloucester City Plan - Consulting on Part 1: City Vision and Part 3: Site Allocations in 2012 and 2013.

We secured £1.2 million in heritage lottery funding for the Townscape Heritage Initiative in Southgate Street.

The Building Control team processed approximately 1300 applications for Building Regulation Approval during the last Council Plan.

Council officers negotiated with developers to ensure the new Aldi on Bristol Road includes a bespoke palette of materials to match the surrounding character of the area.

The Development Control team determined more than 2,200 planning applications during the last Council Plan; with a success rate at appeal of over 90%.



# People

## A City for Everyone

### A reduction in the levels of deprivation in the City

Working with our partners we established the Community Legacy Group, tasked with tackling deprivation in the City.

Total crime rates in the City have fallen throughout the duration of the last Council Plan.

We have supported the development of an Anti-social Behaviour Patrol (in conjunction with GCH, Project Solace and Gloucester Constabulary).

In Partnership with Public Health we secured £100,000 to deliver the Hearty Lives project in Podsmead.

We worked with communities to tackle anti-social drinking by setting up a second Designated Public Place Order in Barnwood to help control nuisance alcohol drinking.

Working with our partner Civica we have seen year on year reductions in the time to process Housing Benefit claims, ensuring those in need receive the entitlements they are due more quickly.

We prevented 2,662 Households from homelessness, through the homelessness prevention service.

---

### Excellent services shaped by our communities and their needs

We supported the Redwell Centre in Matson to become a Community Interest Company.

Following a £2 million investment we opened the Mulberry Room for Wakes and the Willow's Tea Room along with the Cedar Garden at the cemetery and crematorium.

Our housing partner Gloucester City Homes (GCH) were re-accredited with a Customer Service Excellence Award, and Investors in People Gold Award. GCH also received recognition in the 2012 Housing Heroes Awards with both the finance team and Project Solace selected as finalists. A best practice award was also given for their work in managing anti-social behaviour.

The food team have provided at least 8 food hygiene training sessions every year. This has seen the percentage of premises that are broadly compliant for food hygiene increase from 90% to 92%, with the percentage of premises achieving a top hygiene rating of 5 increase from 69% to 75%.

We have worked with Police, GCH, Greensquare Group and the PCC to pledge closer partnership working over the next 10 years. Part of this includes funding of the multi-agency "Hello Gloucester" van which will be launched in October and will be used as a resource to deploy in our communities for events, consultations and in cases of major incidents.

We have provided a specific grants programme to directly support people and groups with ideas that benefit their communities.

In 2012/13 we maximised the collection rate of Business Rates and achieved the highest ever collection rate of 98%.

In 2012/13 we achieved our best ever Council Tax collection rate, a 0.9% increase on the previous best.

With our partners Civica, we have prepared for future welfare changes by reskilling employees to deliver alternative types of assessment work for other Councils. This has meant jobs have remained in Gloucester but now the team have more transferable skills.

We reviewed our Pest Control Service and by introducing charging and by appointing a contractor we delivered £40,000 in savings.



## Housing stock that meets the needs of our residents

382 affordable homes were provided in the City over the duration of the last Council Plan.

We secured £600,000 of funding to deliver flood alleviation projects and delivered, contributed and supported 19 flood alleviation schemes, reducing flood risk to 550 homes.

We arranged for the implementation of individual flood protection measures in 68 homes.

139 Category 1 hazards have been removed from private rented properties through enforcement action.

115 private rented homes have been improved through enforcement action.

Through the Warm & Well Scheme 1,351 measures have been introduced into 1,182 properties. The value of these improvements exceeds £1,000,000.

80 Properties that were empty for more than four years have been brought back into use, bringing the total number of empty properties in the City down to 3% of the total housing stock – its lowest level since 2009.

We have issued 270 disabled facility grants to enable people to live independently in their homes. The total value of these grants is almost £1,500,000.

Our partners Gloucester City Homes completed the Decent Homes Programme.

During the last Council Plan Gloucester City Homes carried out over 3,300 individual home improvements to social housing, at a total value of almost £14 million.

During the last Council Plan we negotiated and received £597,000 through S106 agreements. These are payments to the Council that are invested in capital projects for our communities, and result from large-scale residential developments.

We established the “Fit to Rent” scheme, a public register of private rented properties that the Council have confirmed meet all regulations.

The number of homeless households in temporary accommodation at any one time was reduced by 50% during the last Council Plan.

Over 5,000 new applications for affordable social housing were assessed, in line with the Gloucestershire Homeseeker Policy.

2,230 affordable social homes were let in Gloucester through the Gloucestershire Homeseeker Choice Based Lettings Scheme.

40 units of interim accommodation were provided, to reduce the number of households placed in emergency bed & breakfast accommodation, in partnership with Gloucester City Homes.

We have developed a partnership with Chapter 1, a Housing Association, to work with owners of long term empty properties to bring them back into use. Chapter 1 refurbish the properties and in return the owner agrees that they will manage the letting of the property

for 5 years so that they can recover the costs of the refurbishment.

We used our powers of compulsory purchase to bring a long term, nuisance property on the Bristol Road back into use. The property is now owned and let by Elim Housing Association.

## Greater participation in voluntary and community activity to deliver the “The Big Society”

We secured £1,000,000 in additional funding to support community development in Podsmead.

We have established Community Builders in Matson and Kingsway to enable asset-based community development (ABCD).

We Launched ‘Paws on Patrol’ – a scheme whereby dog owners become the ‘eyes and ears’ of a community.

We engaged teenagers and young adults in Local Democracy Weeks, in partnership with Gloucestershire College, local schools and G15. Events included a marketplace with stalls from council services and partners, councillor “speed dating” and a question time event.

We have increased electoral registration rates year on year.

We supported the Hempsted Neighbourhood Forum to progress a Neighbourhood Plan.

We worked with community leaders in Barton & Tredworth to encourage them to set up a community panel to bring a grant of £50,000 (‘Community First’ fund) to the ward.

We have endorsed and supported the ‘National Citizen Service’ programme, delivered locally by Gloucestershire College. Over the last 3 years, the participants of this programme have raised the profile and collected valuable funds for numerous local charities and voluntary organisations, including Play Gloucestershire, Food Bank, the City Farm, the Redwell Centre, the Kingsholm & Wotton Neighbourhood Partnership, The Venture (White City), and Pied Piper.

We have assisted Friendship Café/Gymnasium/City Farm in their successful bid to Gloucestershire County Council to obtain the opportunity to take over and run the Chequers Bridge Youth Centre.

We have worked closely with the Kingsholm and Wotton Neighbourhood Partnership to ensure that the Kingsholm & Wotton Community Centre become financially viable, thus securing the future of this community asset.

Our Community Builder has helped over 100 residents of Kingsway establish new clubs and societies that they wanted to see in their community.

We have developed and supported a ‘Street Rep’ group in Barton & Tredworth to encourage residents to become more involved and in turn, influenced how services (Amey’s contract) are adapted to address local

## Diverse communities that are welcomed, supported and involved in the life of the City

We supported the many community-led celebrations of Jamaica's 50th anniversary of independence.

We support many community and voluntary organisations across the City including the Asian Elders Group, which provides social contact for Asian women aged fifty-five and over.

We have supported and funded members of the Czech/Slovak community in the City to develop and run a youth group and a dance project for young members of their community.

We supported and part-funded the Barton & Tredworth Cultural Fair, which celebrates the diverse cultures in Barton & Tredworth. This has now become an annual event which sees fantastic interaction between communities and encourages social cohesion in the area.

We are working with community groups and the local Police in Barton & Tredworth to bring 'Barton Fair' back to Barton Street. As a preparation to achieve this purpose, in the last two years, we have assisted the 'Friends of St James Park' and the Police to organise a cultural fair in their Park.

# Place

## Creating Pride in Our City

### A world-class historic destination

We have enabled the growth of the City's Heritage Open Days - Gloucester now ranks 3rd in the Country for the greatest number of venues!

The Gloucester History Festival was established – now in its fourth year.

Opened the historic Blackfriars Priory for free public viewing, guided tours, live theatre, weddings and private hire.

We were 'highly commended' in the Visit England award for excellence 2013 and received a silver award in 2011.

We achieved gold in the South West Tourism Awards 2012/13 and silver in 2011/12.

We were awarded gold in both 2011 and 2013 in the biennial Green Tourism Business Scheme.

We established the 'meet and greet' scheme for coach tours visiting the City.

In 2011 stage one of the City Museum refurbishment was completed with funding from the Heritage Lottery Fund (HLF). This project included a coffee shop, a new reception, an educational space and the 'Story of Gloucester' up to the late medieval period.

The Folk Museum received a HLF award which enabled a new educational unit to be built, one of the galleries to be refurbished and a refreshment facility to be provided.

### A clear and positive identity for Gloucester

We promoted tourism in the city to an international audience through encouraging production companies to use Gloucester for set locations – included the filming of Harry Potter and Doctor Who.

We became the UK's first Bee Guardian City.

We launched the Believe in Gloucester campaign across the City.

### A diverse portfolio of events in the City

We support a vast annual programme of events, many free to enter, including The Tall Ships Festival, Jamaican Independence Day Celebrations, the History Festival, Heritage Open Days, Music in the Park, Quays Food Festival, Rhythm and Blues Festival, Cajun and Zydeco Festival, The Underground Festival, Olympic 'It's a Knockout' City tour, Strikealight Festival and many more...

We supported the Olympic Torch's journey through the City.

We supported the creation of the Sportbeat Festival.

## A greener and cleaner City

We established a regular programme of Community Clean-up days.

We planted approximately 4,500 trees across the City over the duration of the last Council Plan.

We increased designated Key Wildlife Sites in the City to 9, now covering 215 hectares! Including a new wetlands area at Plock Court.

We have expanded the provision of 'door-step' recycling collections to flats by providing more recycling banks in residential areas.

We introduced environmental crime tri-signage to raise awareness of environmental crime in hot spot areas.

We undertook a £25,000 make-over at Robinswood Hill, providing new seating, barbecue areas and timber sculptures, and installing steps near the summit of the hill to make it easier to access.

Barnwood Park and Arboretum was recognised as an outstanding open space with Green Flag Accreditation.

We extended the household recycling service to all flats and hard to reach properties in the City.

3 public open spaces have been protected for perpetuity by being designated as Queen Elizabeth II Fields in Trust, part of the Queen's Diamond Jubilee celebrations. The designated sites were Plock Court, Gloucester Park and Robinswood Hill.

We now have 6 officially designated Local Nature Reserves in the City.

Over £250,000 has been invested in schemes to lower the carbon footprint of both GLI leisure centre and the Oxstalls Indoor Tennis Centre.

2 areas of the City have been classified as Sites of Special Scientific Interest (SSSI).

During the last Council Plan over £740,000 was invested in the play parks and open spaces throughout the City. New, renovated or improved play areas include Sebert Street Community Space, Waterwells Playing Field, Scott Avenue, Holmleigh Park, Randwick Park, Gloucester Park, Greyhound Gardens, and Chester Road.

We have adopted a new Open Space Strategy and revised our Tree Policy.

We have worked with external partners and local businesses to re-introduce fresh flower baskets and planters across the City Centre.

We introduced the Wildflower Planting in many areas of the City thereby reducing the cost and environmental impact of annual bedding. A number of roundabouts were replanted with lower maintenance plants.

We have carried out a review of all waste and dog waste bins to ensure that we have the right bins in the right places.

Working with Partners, we have carried out a programme of "Deep Cleans" in many of our streets where normal access makes it difficult to keep them to the standard our residents expect. We have also worked with partners such as Amey and Gloucestershire Highways tackled littering through the introduction of litter bins along the A40 bypass and signage in different languages to address the issue of littering.

## A city recognised for its sports facilities, clubs and their achievements

We secured Host City status for the 2015 Rugby World Cup.

Our partners Aspire Leisure Trust have provided a new 4G playing surface, new tennis court surfacing and floodlighting at Oxstalls Sports Park.

The Aspire Leisure Trust have also invested significantly in the facilities at GLI leisure centre, installing a new marine spa & relaxation area, and a hi-tech fitness spin studio. A children's soft play zone and Toddler World activity centre have also been installed at Oxstalls Sports Park.

During the last Council Plan the Council and Aspire invested over £900,000 in new facilities at Oxstalls Sports Park and GLI Leisure Centre.

We have encouraged community groups to run fun days on our open spaces such as the Hucclecote Community Association running a QEII Jubilee Event on King George V playing field, Abbeymead Rovers hosting an annual 6-a-side football tournament and the annual GL4 Together community event.

Blackbridge Jubilee Athletic Track - £380,000 make over of the track financed by City Council, Sport England and fund raising by local athletes.

Supported Gloucester Rowing Club in its successful bid for £500,000 from National Lottery Funding and Sport England's Improvement Fund, for a sustainable new facility.

The Guildhall received the Silver Award from the Green Tourism business scheme.



# You Said, We Did

Launched the new-look Council website, allowing customers improved access to services.

We've made it easier for our customers to make more payments online.

Redesigned the main Council reception, including the provision of a new ticketing system that has reduced the average customer wait time from 40 to 8 minutes.

Introduced Gov Delivery, allowing residents to selectively sign up to Council emails and newsletters based upon their interests and preferences.

Introduced Gov Metric, a customer feedback system for both face-to-face and website customers. Allowing us to improve service design based upon customer's experiences.

Following changes to the service in response to customer feedback the Environmental Health Noise Service received a 'Highly Commended' at the John Connell Noise Awards.

We introduced an opt-in paid for garden waste collection service. Residents told us through consultation that they would rather opt-in to a paid collection service than face a rise in council tax for everyone.

Introduced a knowledge test for private hire vehicle drivers to ensure all have a basic level of numeracy and literacy. All licensed private hire drivers in the City have now passed this test.

You told us cleanliness in the City Centre was a priority, so we invested in four new mechanical cleaners and sweepers to help keep the heart of the city looking great.

We have continued the gull egg oiling programme to help control the City's sea gull population.

We worked with our partners, the County Council, The Environment Agency, Gloucestershire Airport and Cory Environmental to secure Gull control at the Hempsted Landfill site.

## Our Council Finances

The council has made significant savings through reductions in expenditure, service efficiencies and increased income generation.

For example, the council has:

- Made ongoing savings on management and staffing costs.
- Shared services with other councils, and innovative outsourcing partnerships.
- Achieved better deals on goods and services that it buys.
- Increased income through increased customer uptake of services and some fee increases.
- Made savings in back office services to minimise the impact on front-line services.
- Frozen Council Tax for the past four years.

### Ward Changes Agreed by the Boundary Review Working Group

Name of Ward	Number of Cllrs per Ward	Electorate 2014	Variance 2014	Electorate 2020	Variance 2020
Barton and Tredworth	3	7,697	5.91%	7,928	2.27%
Kingsholm and Wotton	2	5,156	6.41%	5265	1.81%
Kingsway (new Ward)	2	3841	-20.8%	5,018	-3%
Quedgeley Field Court	2	4535	-5.8%	5424	4.95%
Longlevens	3	7,689	-0.9%	7806	0.69%
Tuffley	2	4,707	-3%	4,720	-9.4%
Elmbridge	2	4,998	3.1%	5,094	-1.5%
Quedgeley Severnvale	2	4,831	-0.3%	4,912	-4.96%

#### Agreed Changes to Wards Without Cross-Party Agreement to

- a) Current Westgate Ward boundary remaining unchanged and to have 3 Councillors, but no agreement on whether it could be split into more than 1 ward.
- b) Polling District M1A from Quedgeley Severnvale Ward to the Ward currently known as Grange Ward, but no agreement on other boundaries for Grange.

#### Wards Without Cross-Party Agreement

- Westgate
- Abbey
- Barnwood
- Grange
- Hucclecote
- Matson and Robinswood
- Moreland
- Podsmead

## Gloucester Boundary Review

**Existing Ward Name :** Barton and Tredworth

**Proposed Ward Name :** Barton and Tredworth

**Electorate at 2014 :** 7697

**Electorate at 2020 :** 7928

**Proposed Representation:** Three Councillors

**Variance from the Average:** 2.27%

(Figures based on 39 Councillors, 2020 projection)

### Detail

The proposed Ward will be coterminous with the Existing Ward.

Barton and Tredworth is a well established Ward with three Councillors. It is in a central position in Gloucester near the bus and train station. It is a Ward with 45 different communities with an estimated 50 different languages spoken.

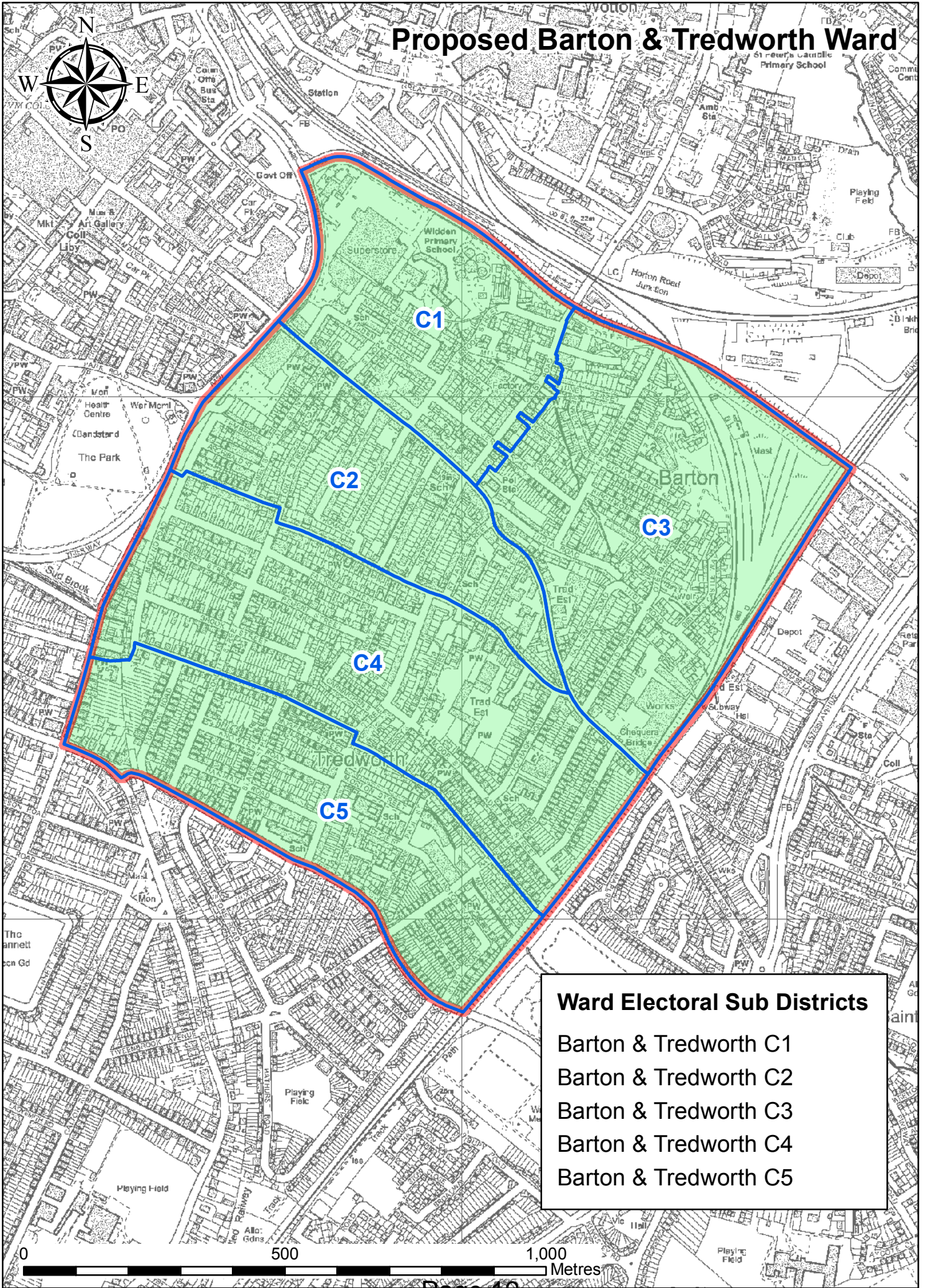
The Ward has distinct Boundaries formed by major roads on three sides and the main railway line on the other.

The community facilities consist of several community centres for the community, a junior school and a primary school, doctors' surgery, police station, and various places of worship for the multi-faith community. The Ward also has a superstore, various shops, cafes and restaurants.

**The electoral equality of the proposed Ward is satisfactory and follows LGBCE guidelines.**



# Proposed Barton & Tredworth Ward



**Ward Electoral Sub Districts**

- Barton & Tredworth C1
- Barton & Tredworth C2
- Barton & Tredworth C3
- Barton & Tredworth C4
- Barton & Tredworth C5

## Gloucester Boundary Review

**Existing Ward Name :** Elmbridge

**Proposed Ward Name :** Elmbridge

**Electorate at 2014 :** 4,998

**Electorate at 2020 :** 5094

**Proposed Representation:** 2 Councillors

**Variance from the Average:** -1.5%

(Figures based on 39 Councillors, 2020 projected figures)

### Detail

Elmbridge Ward is located north of the City. It shares a boundary with the Wards of Barnwood, Kingsholm and Wotton, Longlevens and farmland beyond the City boundary. The Ward is a well established Ward with a mature residential area which has the associated facilities such as schools and playing fields.

The proposed Ward will be coterminous with the existing ward, apart from where a boundary change along the road boundary of Horton Road and Cheltenham Road rather than the boundary of Wotton Brook which will bring approx 411 electors from Kingsholm and Wotton Ward to Elmbridge Ward. This will also improve electoral equality in Elmbridge Ward. The proposed Ward will continue to have 2 Councillors.

The Ward has two doctors' surgeries and one dentists surgery.

The Ward has two churches; Lonsdale Road Methodist Church and Brethren's Meeting Room.

Elmbridge Ward has a very good level of community facilities with five facilities identified in the recent Communities Facilities Audit. All of which are available to all members of the community, these are; Elmbridge Junior School, Sir Thomas Rich's School, Lonsdale Methodist Church, Brethren's Meeting Room



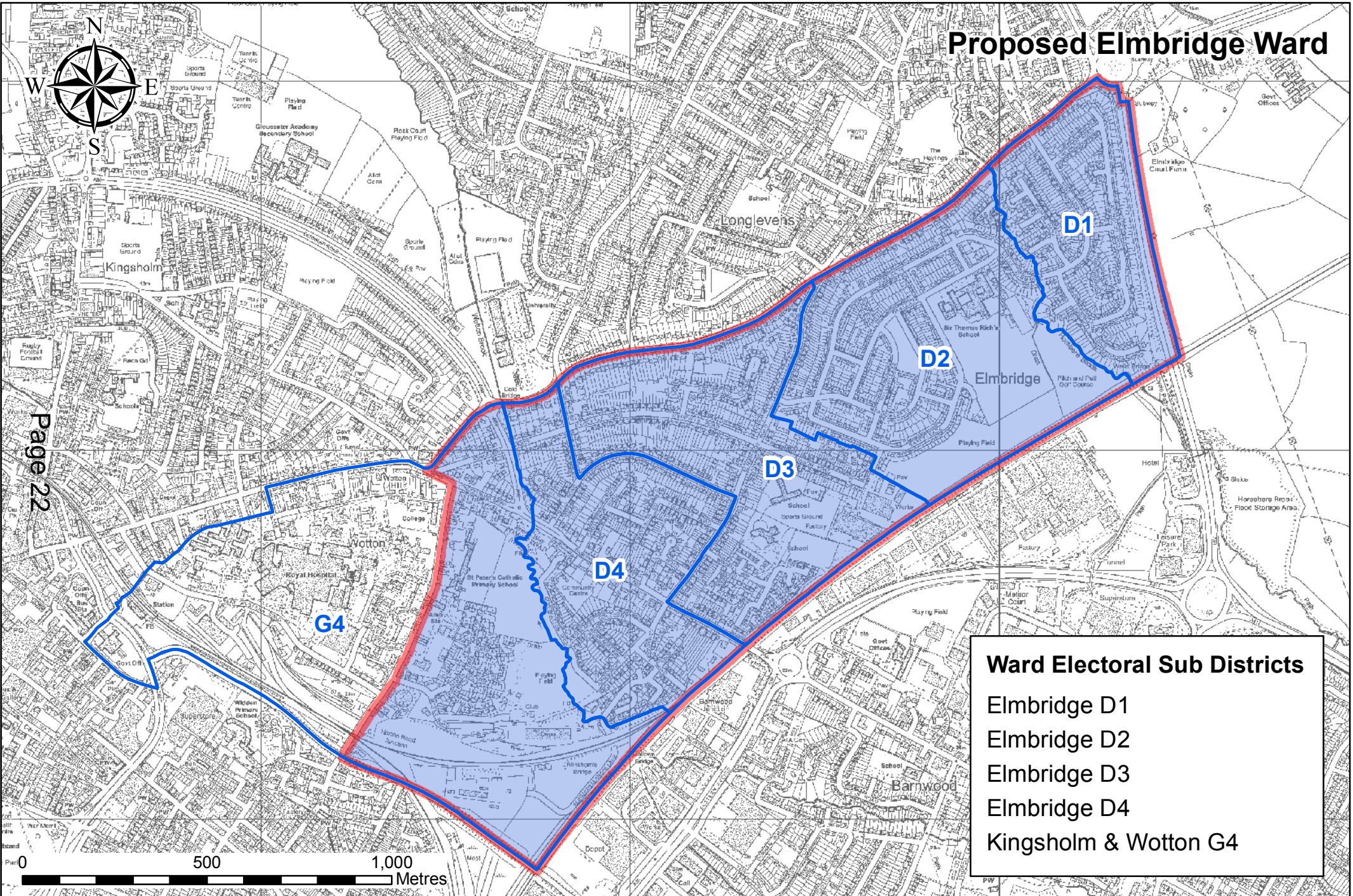
and Elmscroft Community Centre. There are leisure facilities available at Sir Thomas Rich Sports Centre, Elmscroft Community Centre and Old Richians' Sports and Social Club.

By moving the Ward boundary St Peters Primary School will be placed in the Ward , this will increase the education facilities to four schools in the Ward.

**The electoral equality of the proposed Ward is Satisfactory. The Ward follows the LGBCE guidelines.**

DRAFT

# Proposed Elmbridge Ward



## Gloucester Boundary Review

**Existing Ward Name :** Kingsholm and Wotton

**Proposed Ward Name :** Kingsholm and Wotton

**Electorate at 2014 :** 5,156 Electors

**Electorate at 2020 :** 5,265 Electors

**Proposed Representation:** 2 Councillors

**Variance from the Average:** 1.81%

(Figures based on 39 Councillors, 2020 projected figures)

### Detail

The proposed Ward is coterminous with the existing Ward except an area along Horton Road and Cheltenham Road, which is proposed to merge with Elmbridge Ward.

The road layout in Kingsholm and Wotton Ward derives from the Roman Period and was later reconstructed by Aethelflaed the Daughter of Alfred The Great who lay out the core street plan which is still in use today. She ruled the kingdom of Mercia from the lost Palace of Kingsholm and was buried at St Oswald's Priory.

Currently, Kingsholm and Wotton wraps around the northern side of the City centre. It share boundaries with Westgate, Longlevens, Elmbridge and Barton and Tredworth. The Ward is bound by the southern side of Escourt Road to the North, it follows Escourt Road around to the East and then continues along the A38 to the point it meets the brook which it follows to the railway triangle. The boundary then follows Metz Way, where it takes in Twyver House and the Railway Station. The boundary continues north east along the railway line.

The Kingsholm and Wotton Ward boundary will change in the proposed Ward. Electors on the east of Horton Road and Cheltenham Road will be transferred to Elmbridge Ward.

The character of Kingsholm and Wotton Ward is very diverse in character, it has a variety of housing from Edwardian to modern, with a good mix of housing tenures. Is the third most ethnically diverse Ward in the City. Gloucestershire Royal Hospital (GRH) is in the Ward as is the rugby stadium, the Railway Station and Clapham Court, which is the City's only high rise residential block. This block is managed by Gloucester City Homes (GCH) and consists of 80 one bedroom sheltered flats, with communal facilities and staff on site.

The Ward has two doctors' surgeries as well as the hospital, two dentists, a reference library and four churches. Two schools will be in the proposed ward, with St Peters Primary School moving to Elmbridge Ward. The Ward will retain six community facilities as well as The Lawn Tennis Club.

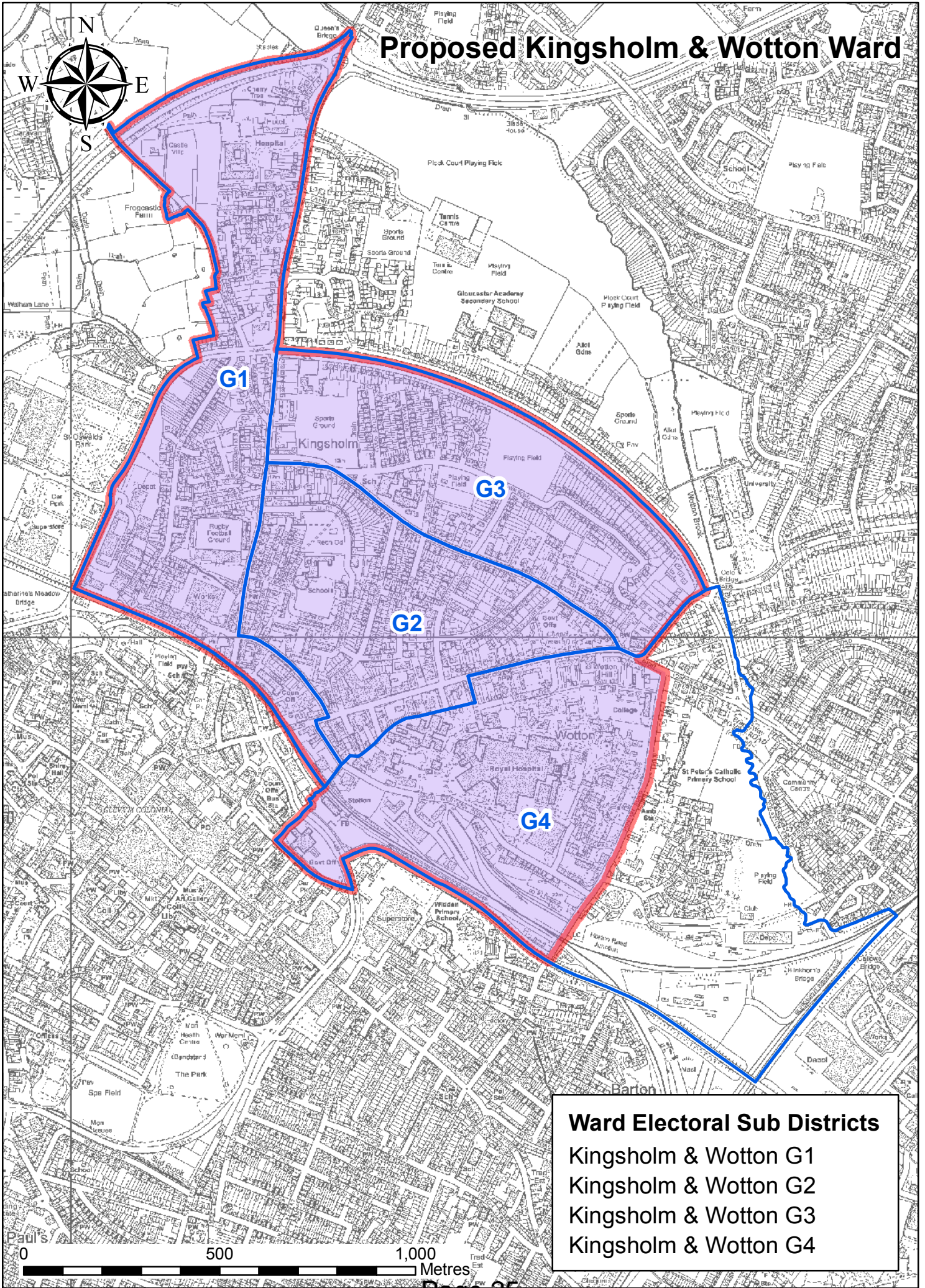
This well established Ward has three community Groups; Kingsholm and Wotton Neighbourhood Partnership, Friends of Hillfield Gardens and Twyver Triangle Residents Association.

The proposal to transfer the 411 electors east of Horton Road and Cheltenham Road to Elmbridge Ward means the Ward boundary will be strengthened and both Kingsholm and Wotton Ward and the neighbouring Elmbridge Ward will be better balanced for community facilities.

**The electoral equality of the proposed Ward is Satisfactory. The Ward follows the LGBCE guidelines.**



# Proposed Kingsholm & Wotton Ward



**Ward Electoral Sub Districts**  
Kingsholm & Wotton G1  
Kingsholm & Wotton G2  
Kingsholm & Wotton G3  
Kingsholm & Wotton G4

## Gloucester Boundary Review

**Existing Ward Name :** NA

**Proposed Ward Name :** Kingsway

**Electorate at 2014 :** 3841 (L2 Polling District)

**Electorate at 2020 :** 5018 Electors

**Proposed Representation:** 2 Councillors

**Variance from the Average:** -3%

(Figures based on 39 Councillors, 2020 projected figures)

### Detail

Gloucester Boundary Review Working Group has proposed a new Ward to be created in Gloucester City. This Ward will consist of part of the existing Quedgeley Fieldcourt Ward Polling District of L2 on the former RAF Quedgeley site to the Eastern side of the A38, to create the new Ward, Kingsway.

Kingsway's boundaries with the Quedgeley Fieldcourt Ward will be Rudloe Drive , Wendling Road, Boulmer Avenue, Goose Bay Drive and the disused railway line . This replaces the existing Polling District boundary. It also has a boundary line along the A38 dual carriageway with the Quedgeley Severnvale Ward to Nass Lane.

The proposed new Ward has elector figures of 5018 for 2020. As a two Councillor Ward it would have 2509 electors per Councillor slightly below the average for Gloucester City.

As a Ward Kingsway will be a community in its own right. It has recently gained new shops (Goose Bay Drive), The Barn Owl Public House, a school in Valley Gardens, a new permanent community centre to replace the temporary one and Kingsway sport Pavilion. This fast growing community is a mix of tenures and house types and has been planned with large areas of open space, off road strategic footpaths and cycle ways exist throughout the new proposed Ward of

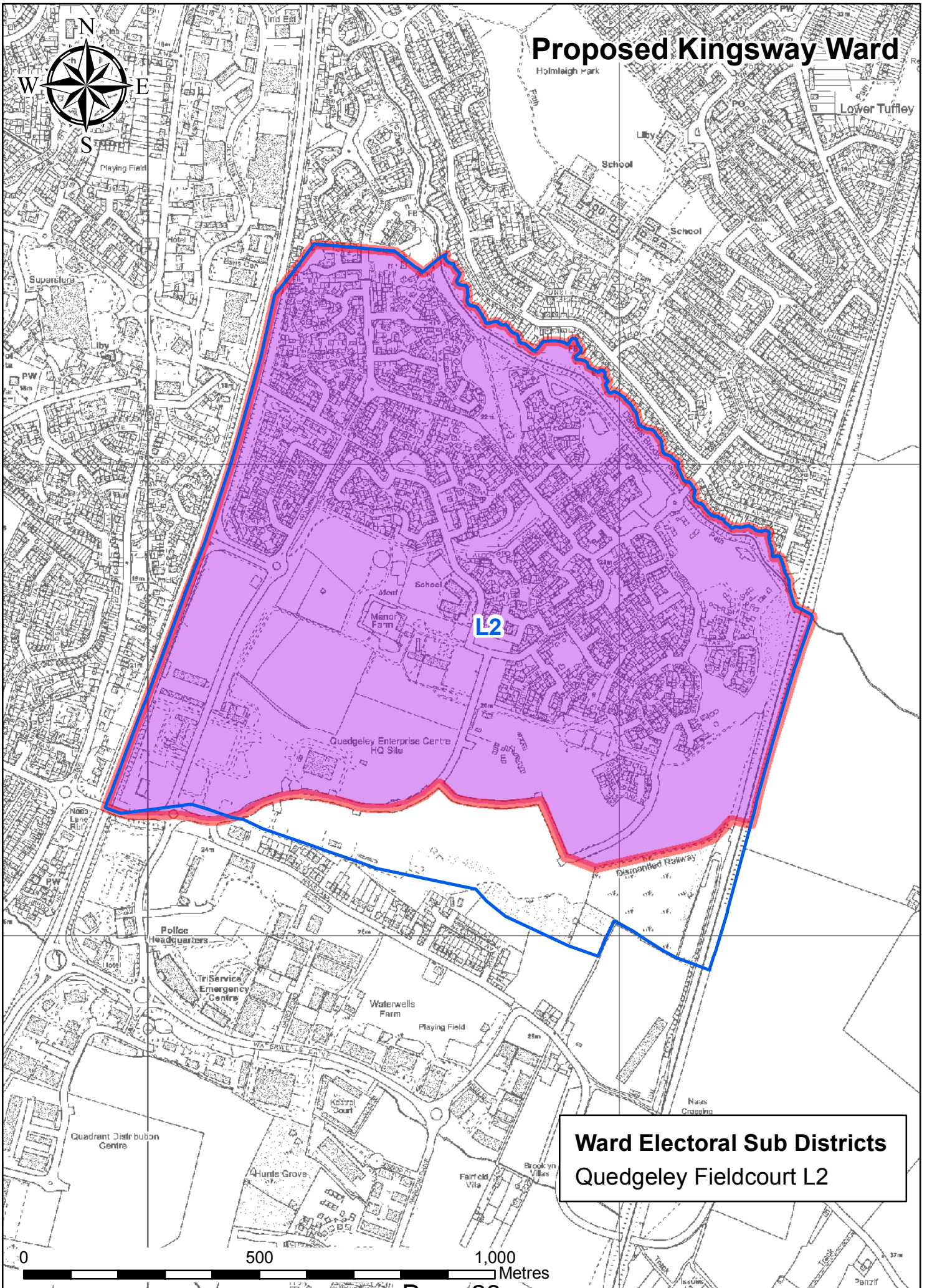
Kingsway. This enables the area to have access to the main shopping district and larger stores in Quedgeley.

**The electoral equality of the proposed Ward is Satisfactory. The Ward follows the LGBCE guidelines.**

DRAFT



# Proposed Kingsway Ward



**Ward Electoral Sub Districts**  
Quedgeley Fieldcourt L2



## Gloucester Boundary Review

**Existing Ward Name :** Longlevens

**Proposed Ward Name :** Longlevens

**Electorate at 2014 :** 7689

**Electorate at 2020 :** 7806

**Proposed Representation:** 3 Councillors

**Variance from the Average:** 0.69%

(Figures based on 39 Councillors, 2020 projection)

### Detail

The proposed Ward will be coterminous with the existing Ward.

The 2014 electorate of the existing Longlevens Ward is 7689 this is projected to grow to 7806 by 2020. This give a variance of 0 .69% from the average ratio with a Council of 39 Councillors.

Longlevens is a community well catered for in terms of local shops and facilities. On Cheltenham Road there is a modern Co-Op supermarket. Close by is a small parade of shops featuring ; a chemist, estate agent, hairdresser, Cantonese take-away and funeral directors. A short distance away is an Indian restaurant and a BP petrol station. Close by are two GP surgeries, a branch library, a pub and the Parish Church.

There are three Churches in Longlevens; the Baptist Church, Holy Trinity Parish Church and Methadist Church. The community has a popular village hall in Church Road which is utilised for local events. A rugby football club (Longlevens Rugby Football Club) and a Association Football Club (Longlevens AFC) which have junior and senior teams who play regular fixtures.

Longlevens is served by two infant schools and two junior schools and Milestones a special state school for boys and girls aged 2-16. Gloucestershire

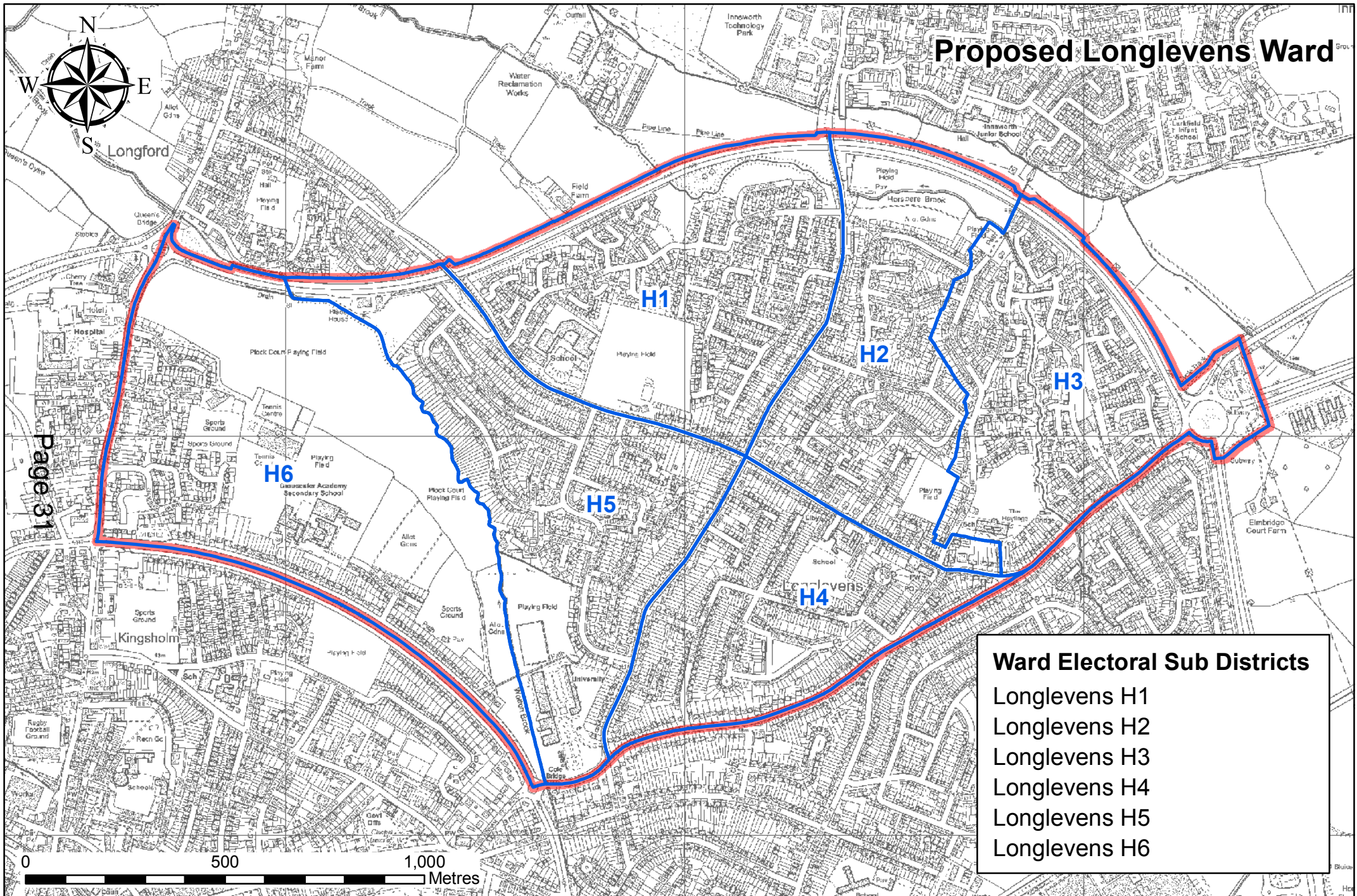
University also has a campus in Longlevens Ward with residential accommodation.

The Longlevens community is served by a frequent bus service to Gloucester town centre and to Cheltenham (approx 6 miles away) most of the day which runs at 10 minute intervals.

Longlevens Neighbourhood Partnership which is run from Kendal Road Baptist Church does a lot of good work in the community and in 2009 their Youth Action Group won an award from Gloucester City Council for their work with young people.

**The electoral equality of this proposed Ward is satisfactory. The Ward follows LGBCE guidelines.**

DRAFT



## Gloucester Boundary Review

### Current Ward

Existing Ward Name : Quedgeley Fieldcourt

Proposed Ward Name : Quedgeley Fieldcourt

Electorate at 2014 : 8376

Electorate at 2020 : 10442

Proposed Representation: 2 Councillors

Variance from the Average: 50.50%

### Proposed Ward

Quedgeley Fieldcourt Amended Ward Electorate at 2014: 5318

Quedgeley Fieldcourt Amended Ward Electorate at 2020: 5424

Proposed Representation: 2 Councillors

Variance from the Average: 4.95%

(Figures based on 39 Councillors, 2020 projection)

The existing Ward of Quedgeley Fieldcourt lies to the Southwest of the City and is bounded to the east by the mainline Birmingham to Bristol railway with Stroud District beyond. To the North of the Ward lie Grange and Quedgeley Severnvale Wards and to the South by Hardwick Ward which lies within Stroud District. Quedgeley Fieldcourt is a large Ward which includes the Kingsway development.

The whole Ward lies within Quedgeley Parish Council which is Gloucester's only Parish Council.

The Ward is characterised by residential development with the shops, services and community facilities that such a development requires.

Gloucester Boundary Review Group propose to split Quedgeley Fieldcourt Ward by making the majority of L2 (Kingsway) a Ward in its own right. The main reasons for this are:

- With no changes the Ward variances would be unacceptably high.
- Kingsway is currently a growing community in its own right with a school, shops and community facilities.
- There is a natural boundary between the Kingsway development and Quedgeley Fieldcourt (A38).
- The Electoral Forecast predicts numbers suitable for two Wards with two Councillors each. This would provide two Wards with electoral equality.

Quedgeley Fieldcourt would encompass most of the original Polling Districts (L1, L2A, and L3) the boundary between L2 and L3 would be moved to the road boundary and disused railway line (see map). This is to accommodate the new dwellings and provide electoral equality. South of the new boundary line there is a later stage development of 435 dwellings (783 electors) by 2020 in Polling District L3 which will bring the elector figures within allowed variances.

Quedgeley District Centre lies to the West of the Ward and comprises a large superstore, other retail warehouses and smaller shops. Quedgeley Fieldcourt Ward has a doctors surgery (St James) which is located to the rear of the superstore, this practice has been extended recently. There is also a dental practice located in the same vicinity.

There is a library located near to the District Centre. This is a well used community facility and is close to the shops, the police station, Village Hall and Community Centre.

The Village Hall is used during the day and evenings by various groups offering a wide range of community activities. Quedgeley Baptist Church also meet at the village Hall as does the local scout group. The Community Centre is run by the Parish Council this has two large halls and is also well used by the local community, providing the location for the Luncheon Club and evening community activities, including Quedgeley Social Club which is run by local residents.

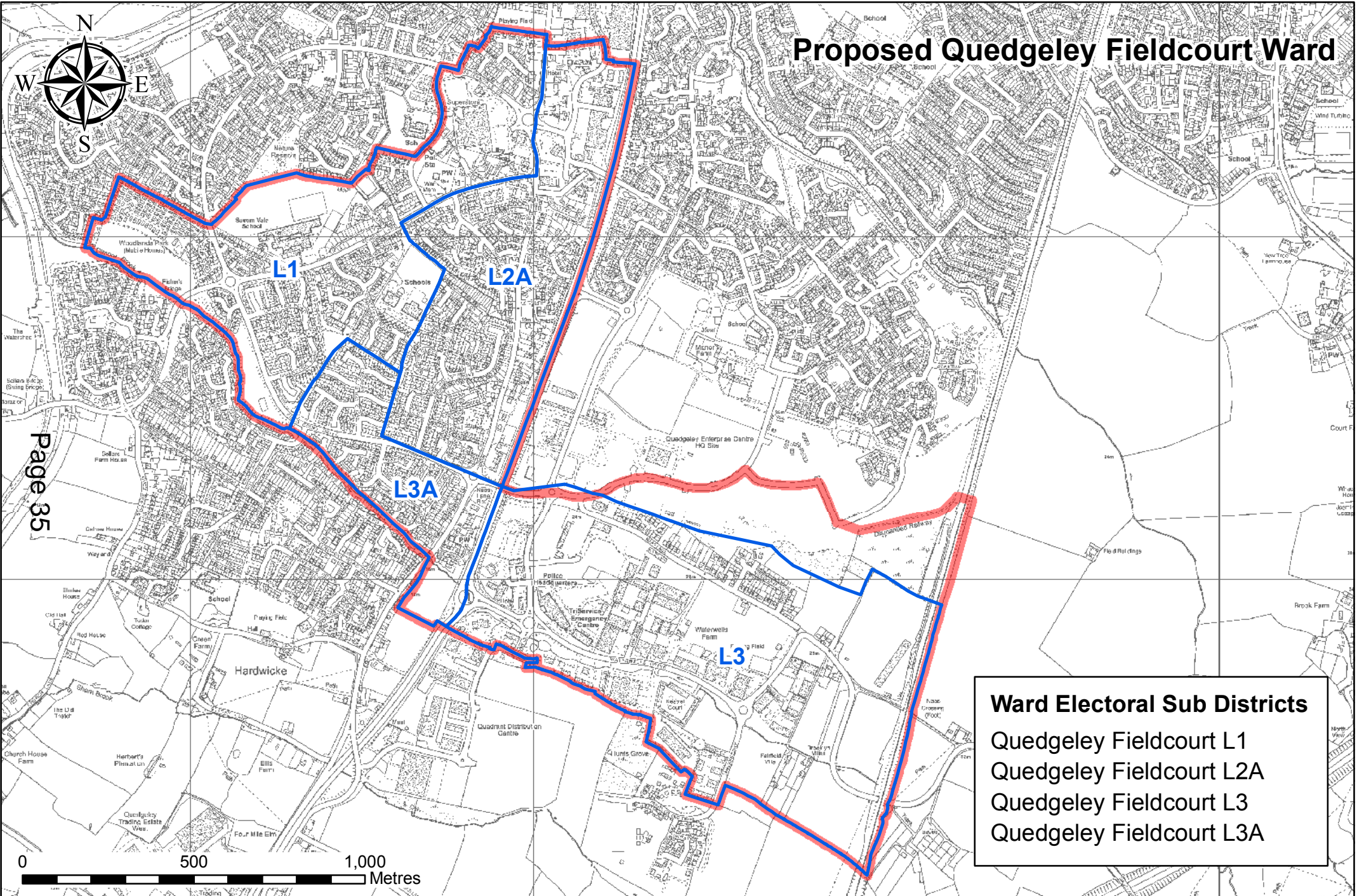
It is worth noting that most of the Quedgeley Fieldcourt Ward's community facilities are on the West of the A38. This strengthens the case for Kingsway in its own right.

**The electoral equality of this proposed Ward is satisfactory. The Ward follows LGBCE guidelines.**

DRAFT



# Proposed Quedgeley Fieldcourt Ward



Page 35

## Gloucester Boundary Review

**Existing Ward Name :** Quedgeley Severnvale

**Proposed Ward Name :** Quedgeley Severnvale

**Electorate at 2014 :** 4,831

**Electorate at 2020 :** 4,912

**Proposed Representation:** 2 Councillors

**Variance from the Average:** -4.96

(Figures based on 39 Councillors, 2020 projected figures)

### Detail

The Current Ward of Quedgeley Severnvale lies to the South west of the City and is the northern most Ward in the Quedgeley Parish, which includes Quedgeley Fieldcourt Ward.

The Ward is bounded by the West by the River Severn and is bisected by the Gloucester to Sharpness Canal, which runs north east to south west through the Ward.

The Boundary Review Working Group propose to move the Polling District M1A out of Quedgeley Severnvale Ward. This area will be transferred to the current Grange Ward. This area is a small development on Streamside, between the A38 and Daniels Brook. Its only connection by road is to the current Grange Ward.

Quedgeley Severnvale as a community mainly uses the nearby shopping district at Quedgeley Fieldcourt as well as Fieldcourt's community facilities. The area is linked to Gloucester Docks via the canal path and has various open areas.

There is one school in the Ward (Meadowside Primary School) which is located in Elmore Lane. There is a community run pre-school club located adjacent to

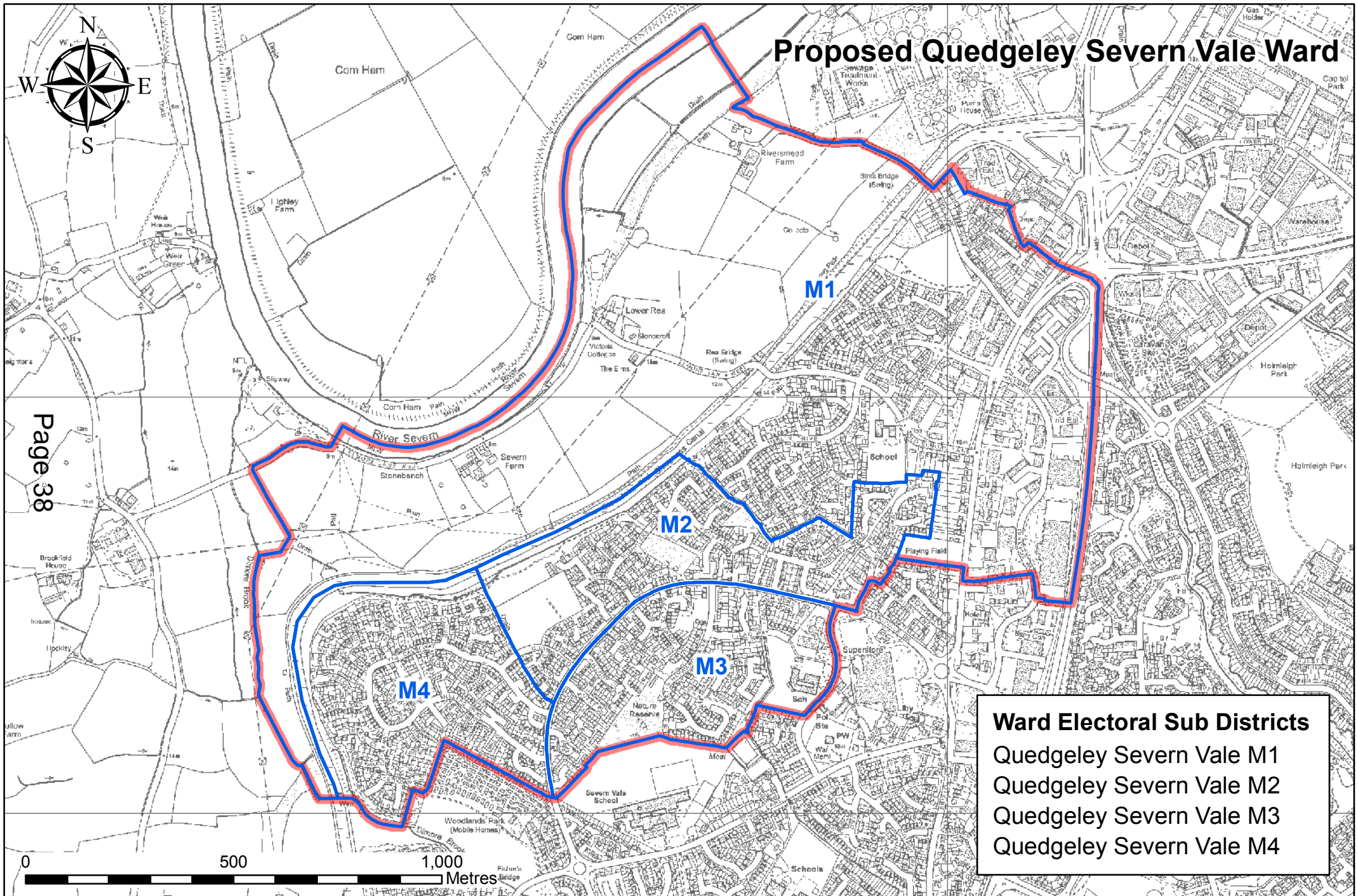


the school, and a private children's nursery located in the Green Farm employment area.

The Olympic Business Park is also located in the Ward . This building also houses The Spring Centre which provides help and support to children and young people with complex needs and profound or multiple disabilities.

**The electoral equality of the proposed Ward is Satisfactory. The Ward follows the LGBCE guidelines.**

DRAFT



## Gloucester Boundary Review

**Existing Ward Name :** Tuffley

**Proposed Ward Name :** Tuffley

**Electorate at 2014 :** 4707

**Electorate at 2020 :** 4720

**Proposed Representation:** 2 Councillors

**Variance from the Average:** -9.4%

(Figures based on 39 Councillors, 2020 projected figures)

### Detail

The proposed Ward will be coterminous with the existing Ward.

The 2014 electorate of the existing Tuffley Ward is 4707 and is projected to grow to 4720 by 2020.

Tuffley Ward is located in the south of the City and is represented by two Councillors. It currently follows the natural boundaries of Tuffley Lane, Cole Avenue and Robinswood Country Park.

Tuffley has a community centre, library, sports centre and small shopping centres easily reached on foot from most of the area. There is a large open playing area which is available for public use.

There are four churches in Tuffley : St Georges (Church of England) in Grange Road, St Barnabas (Church of England) in Stroud Road the tower of this church is a local landmark, English Martyrs (Roman Catholic) is in Tuffley lane and Grange Baptist which is in Grange Road.

There are two primary schools and a secondary school in Tuffley Ward.

Tuffley has good transport links to Gloucester City centre. There is a circular bus service every 10 minutes, as well as other bus routes throughout lower Tuffley.

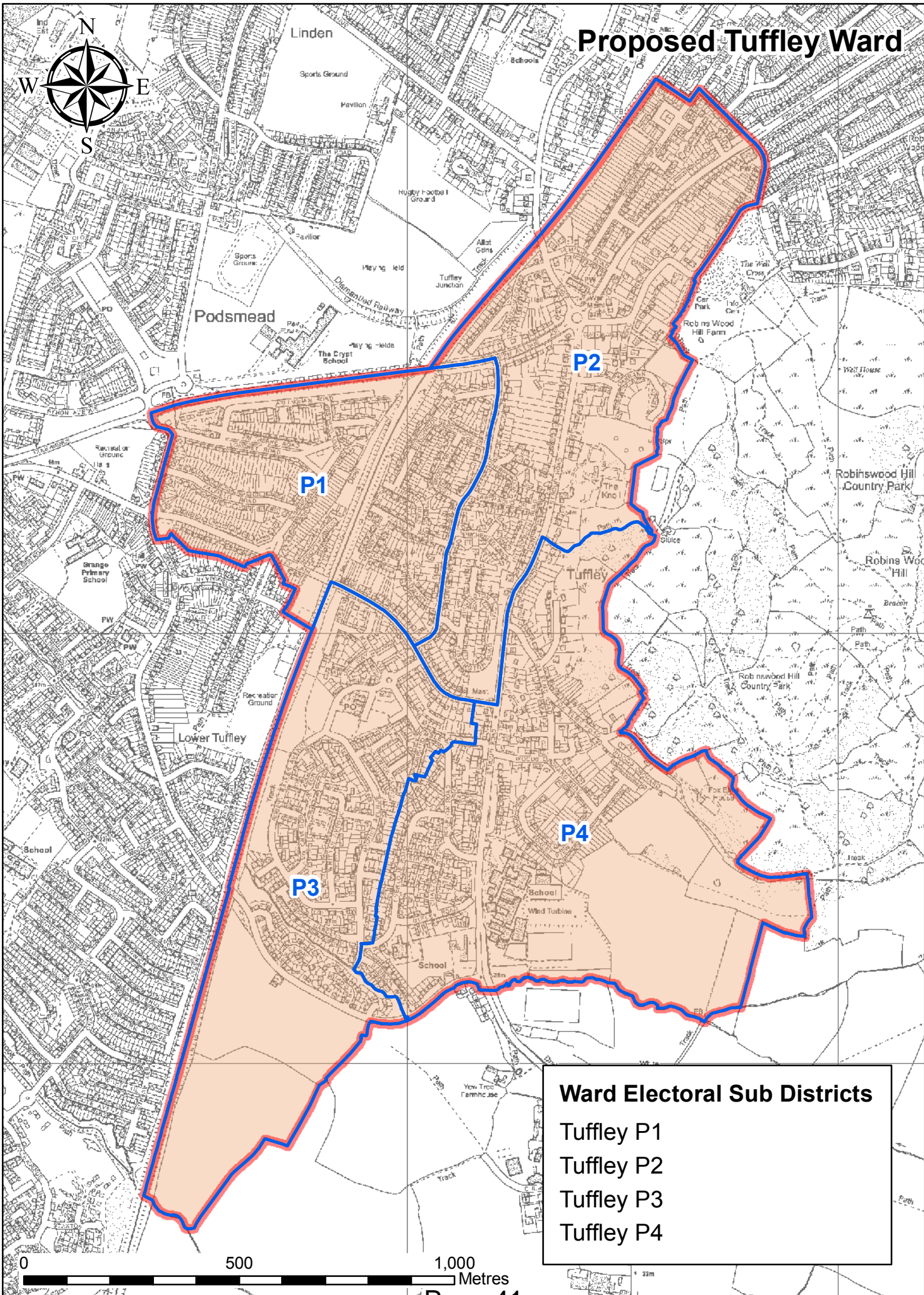
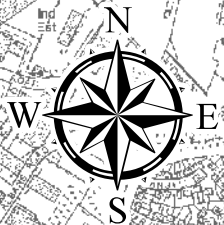
A sports centre serves the Ward and Tuffley has a football team, Tuffley Rovers F.C.

**The electoral equality of the proposed Ward is Satisfactory. The Ward follows the LGBCE guidelines.**

DRAFT



# Proposed Tuffley Ward





This page is intentionally left blank